



| Hale Road | Hale

 JORDAN FISHWICK
EXCLUSIVE



£950,000



A QUITE STUNNING PENTHOUSE APARTMENT WITH EXCEPTIONAL QUALITY FIXTURES AND FITTINGS THROUGHOUT IN A CONTEMPORARY DESIGN.

The penthouse is split over two floors with the principal living space on the lower floor offering a beautiful large open plan area with Kitchen, Dining and Living areas that lead out onto a private balcony. An indulgent master bedroom suite with vaulted ceiling served by a well appointed en-suite with bath and separate shower. There is a further large double bedroom with a stylish en-suite bathroom. Additional living accommodation is accessed via a dedicated glass spiral staircase opening onto an open plan mezzanine area with far reaching views beyond. Additionally the property has underfloor heating, electronic blinds, solid wood flooring also includes two underground parking spaces, lower ground floor store room and use of the immaculately presented communal gardens.

The Residence stands behind a secure gated entrance and is well screened by mature hedges and trees. The property is well placed for access to the many amenities of Hale Barns and Hale village with its range of restaurants, bistros, bars and specialist shops. Altrincham's vibrant market area and Metrolink station are less than a mile away and provide easy access to Manchester City centre and Media City.



- Fabulous Penthouse Apartment
- 2 Dedicated Underground Parking Spaces

- Impressive Interior Design
- Mezzanine Level with Seating Area and Study



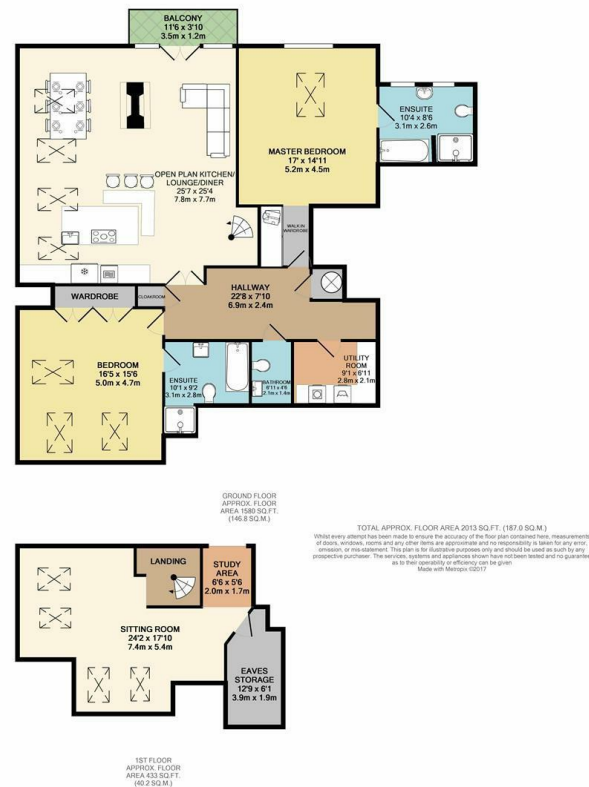
- Gaggenau & Sub Zero Appliances
- South West Facing Private Balcony

www.jfexclusive.co.uk

enquiries@jfexclusive.co.uk



0161 929 3001



Jordan Fishwick
172 Ashley Road
Altrincham
Cheshire
WA15 9SF

enquiries@jifexclusive.co.uk

IMPORTANT: we would like to inform prospective purchasers that these sales particulars have been prepared as a general guide only. A detailed survey has not been carried out, nor the services, appliances and fittings tested. Room sizes should not be relied upon for furnishing purposes and are approximate. If floor plans are included, they are for guidance only and illustration purposes only and may not be to scale. If there are any important matters likely to affect your decision to buy, please contact us before viewing the property.